

# AI RESOURCES FOR EDUCATORS



Always follow your school, district, or corporate policy and tool recommendations regarding the use of Artificial Intelligence in education.

## Prompting Basics

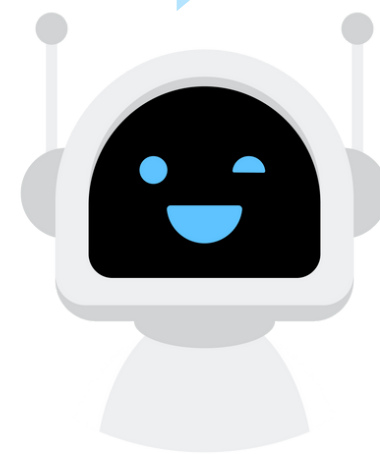
### C.H.A.T

C	Craft Clear Instructions
H	Humanize the Interaction
A	Articulate the Parameters
T	Tweak as Needed

[Select here](#) for a handout that includes examples and more things to consider

### Prompt Ideas

[Select here](#) to explore sample ChatGPT prompts by content area.



## Implementing AI

### Add AI to Assignments

[Select here](#) to explore sample ChatGPT prompts by content area.

### Other AI Tools

[Select here](#) to explore other AI tools, including example use cases for each tool.

### AI Study Buddy for Students

[Select here](#) for ideas on how to use ChatGPT with students.

## AI is here to stay!



### DO:

- Use AI as a tool for help with lesson planning, preparing activities, and personalization
- Be persistent, iterate and refine initial AI output
- Address AI use in class and set expectations

### DON'T:

- Treat AI like a replacement, it is a tool
- Enter student personal information in AI tools
- Blindly trust everything AI generates - check for accuracy and biases

